

■ **Product Overview**

# Open Text Email Management for Microsoft Exchange

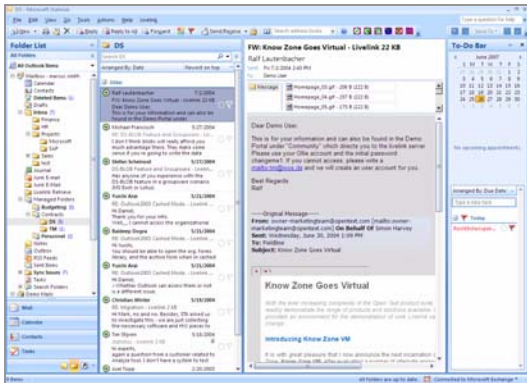
## Manage email as a business record

Organizations are challenged by the ambiguity of information that is being stored in their email servers. It becomes increasingly difficult to assess what content is locked away in user email accounts—let alone understand how to extract and use it. Furthermore, email servers have long since become the first place that opposing counsel or enforcement agents want to look when it comes to finding evidence relevant to a regulatory audit or litigation. Companies need an automated and reliable way of identifying and classifying email messages. Only then can they begin to manage it appropriately—in accordance with regulations and internal risk tolerance policies.

Open Text Email Management for Microsoft® Exchange combines foundational email archiving with robust records management capabilities, helping enable organizations to make the most out of mission-critical content. With Open Text Email Management for Microsoft Exchange you can define, secure and control the processes by which email content is captured, managed, retained and destroyed.

### Capture content into a centralized repository

Seamless integration into Microsoft Outlook—on the front and back end—enables email to be captured in a number of low-impact ways. Emails can be simply dragged and dropped into a folder in Outlook, which automatically initiates the process of intelligently classifying it as a record.



Users continue to have access to captured email records as they always have

Content can also be captured automatically. Mailboxes can be assigned profiles, which then capture content according to specified criteria (such as when the mailbox exceeds a certain size or messages exceed a certain age) or by characteristics of individual messages (such as if they contain an attachment or a particular keyword).

Open Text Email Management for Microsoft Exchange creates a shortcuts, or reference, in Outlook that references the actual physical email. So then, even though email content is no longer stored on the Exchange server, users continue to access email from Outlook—which means assured user adoption and reduced training requirements.

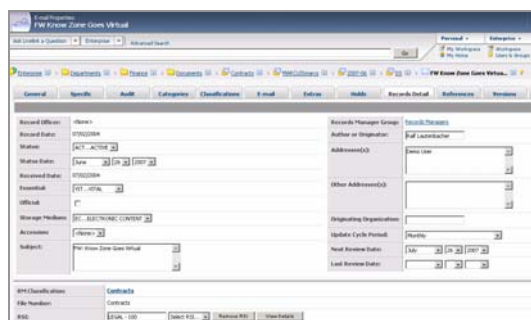
### Assess and identify business record emails

Open Text Email Management for Microsoft Exchange leverages Managed Folders in Exchange 2007, enabling centralized records policies to be mapped to these folders—and ensuring that every time an email is filed into that folder, it transparently inherits the appropriate record retention schedule. Email Management for Microsoft Exchange manages the entire process, and supports fully automated dispositioning to accommodate cost-effective management of an immense volume of email.

Automatic classification capabilities can also be configured to periodically scan the archived emails and ensure that the appropriate records management rules are applied according to criteria such as sender or keywords in the subject or message body. This helps ensure that emails are kept as long as they should be, and then destroyed—and that between user filing and system intelligence, you're doing everything you can to ensure email records are managed appropriately.

### Highlights

- Mitigate risks associated with litigation and discovery orders—including spoliation of evidence and “smoking gun” emails
- Ensure compliance with industry standards and regulations concerning the secure management of email
- Reduce costs associated with mail server performance and backup and restore procedures
- Proven high throughput and scalability
- Easily extend into a complete ECM suite including archiving and records management solutions for Microsoft SharePoint, file systems, and other content stores
- Works with Microsoft Exchange 2007 and 2003

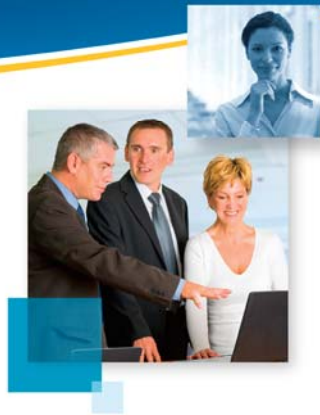


Manage emails as business records according to corporate standards and policies

## Easy and immediate access with advanced search capabilities

Full-text search capabilities support the most demanding enterprise search requirements with unparalleled scalability and performance, and are fully integrated within the Microsoft Outlook interface. By unifying access to all email and attachments—regardless of format, location, and language or media type—you can be sure that the right people have access to the right information at the right time.

Furthermore, the advanced search form enables managers and auditors to build complex search queries using system and custom metadata, retention and disposition classifications, Boolean operators, and modifiers such as Soundex and a thesaurus. Search result pages provide result rankings, automatic summaries, clustered result themes, hit-highlighting, and find similar content. Users can save queries, result snapshots, and multiple search form templates. informative



## Open Text Email Management for Microsoft Exchange Features

<b>Tamper-proof storage</b>	Archive email to secure storage media such as WORM, DVD, UDO, or write-once hard disks. Time stamps and system signatures ensure the integrity of documents.
<b>Visibility and auditing</b>	Review activity logs around email content including who viewed or edited documents, when, and why.
<b>Disaster recovery</b>	Store content safely in multiple physical locations or on high availability storage devices.
<b>Single instance archiving</b>	Detect multiple instances of content and eliminate redundancies, and compress content automatically to minimize wasted space.
<b>Information accessibility</b>	Automatically render content into standardized formats such as PDF and TIFF to ensure future readability.
<b>Information retrieval</b>	Execute powerful full text searches across email content
<b>Designated workspace</b>	A designated workspace provides a place for administrators, managers, and auditors to review and monitor email content.
<b>Preservation</b>	Freeze the disposition lifecycle of potential evidence and protect it from deletion.
<b>Disposition</b>	Support automatic and interactive destruction of documents in accordance with regulatory standards. Deleted files (including indexes and other metadata) are overwritten up to 15 times to help ensure they cannot be created.
<b>Compliance and certification</b>	In addition to regulations like SEC 17a-4, NASD 400, and more, meet internationally recognized standards for records management including Department of Defense 5015.2, PRO in the United Kingdom, PIPEDA in Canada, VERS in Australia, and more.
<b>Complete storage connectivity</b>	The archiving foundation of Email Management for Microsoft Exchange provides full support for all popular hardware storage platforms, including EMC2, Hitachi Data Systems, IBM, SUN, Network Appliance, and more.



Sales	Americas	Europe	Asia/Pacific	
www.opentext.com sales@opentext.com North America Sales 1 800 499 6544 International Sales +1 8004996 5440	United States 100 Tri-State Int'l Parkway Lincolnshire, IL USA 60069 Phone: +1 847 267 9330 Fax: +1 847 267 9332	Germany Technopark 2 Werner-von-Siemens-Ring 20 D-85630 Grasbrunn Phone: +49 89 4629 0 Fax: +49 89 4629 1199	United Kingdom Grosvenor House Horseshoe Crescent Beaconsfield, Bucks HP9 1LJ Phone: +44 1494 679700 Fax: +44 1494 679707	Australia Level 23 100 Miller Street North Sydney NSW 2060 Phone: +61 2 9026 3400 Fax: +61 2 9026 3455

If you are an Open Text partner or customer, visit [online.opentext.com](http://online.opentext.com) for more information about this and other Open Text solutions. Open Text is a publicly traded company on the NASDAQ (OTEX) and the TSX (OTC).